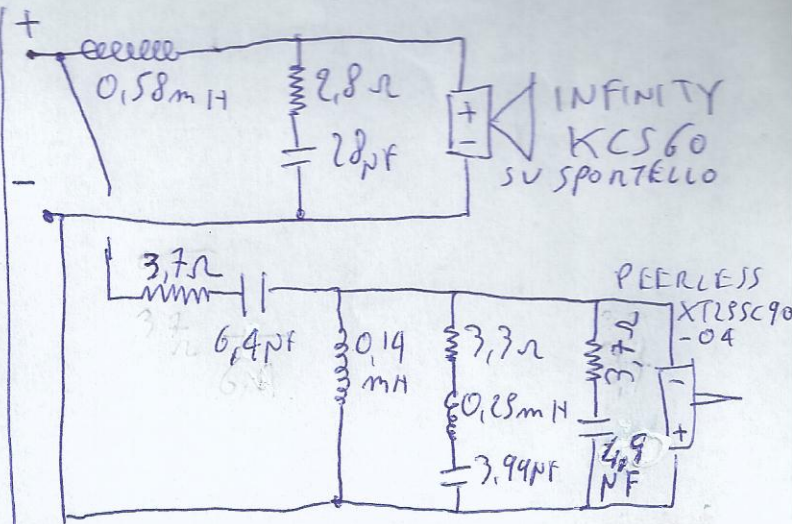
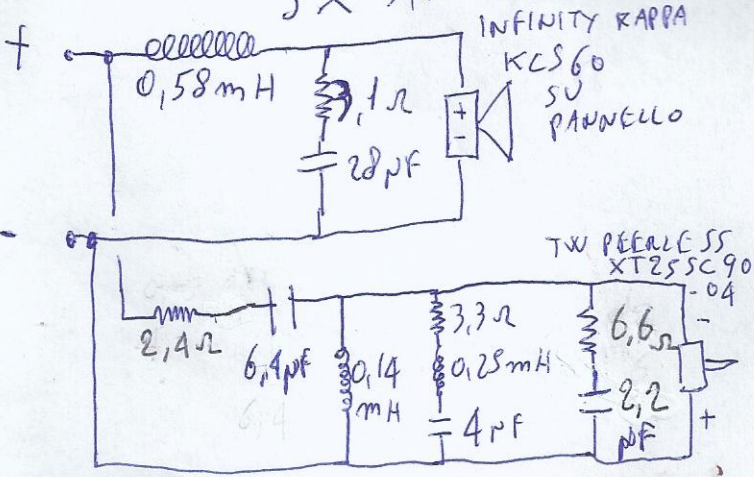


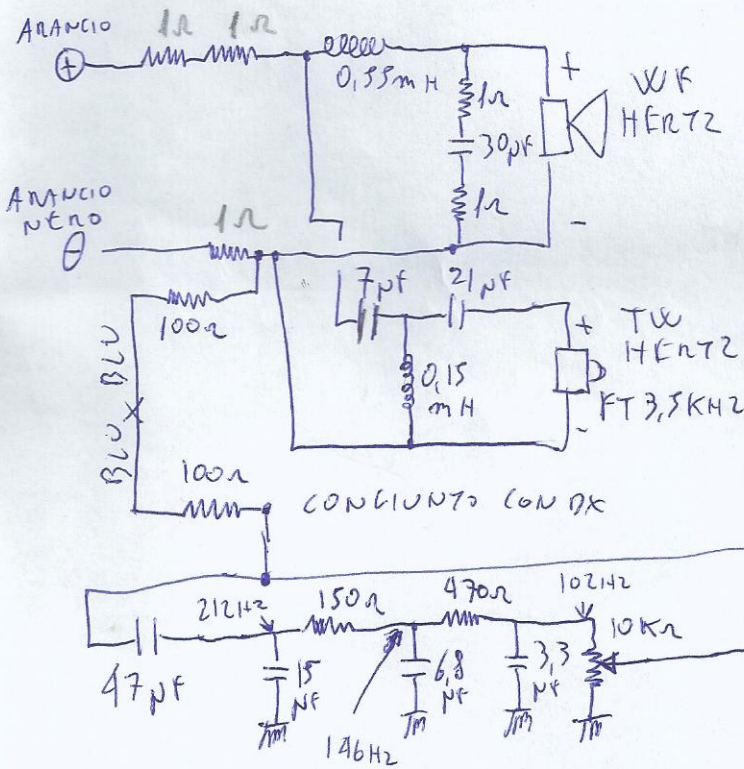
SCHEMA ALTOPARLANTI GIOIELLA

SX ANTERIORE

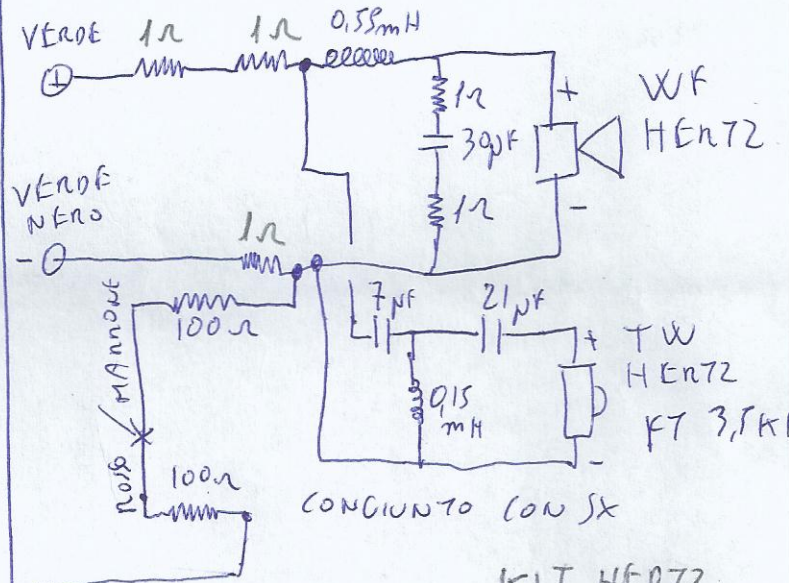


INCROCIO A 2,2 KHZ

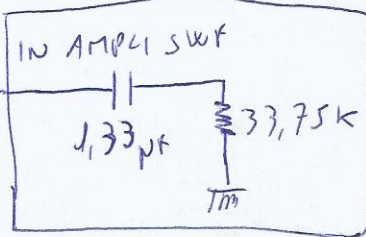
POSTERIORE SX



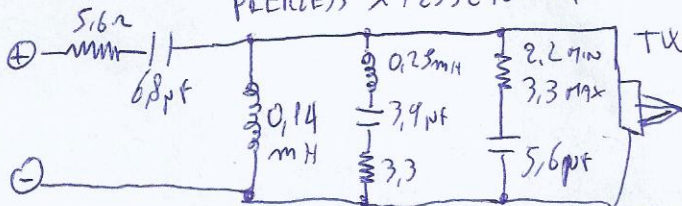
POSTERIORE DX



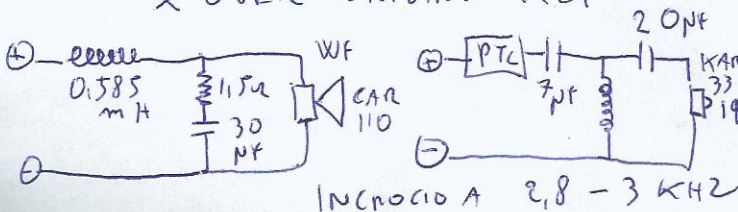
KIT HERTZ
DSK 165



CROSS OVER ORIGINALE AUDIO REVIEW 354 PEARLESS XT25SC90-04



X OVER ORIGIN. KEF



INCROCIO A 2,8 - 3 KHZ

SWF JENSEN SPW 104

CARICO SIMMETRICO

CHIUSO 12 LT + 30% + SPAZIO CONO = 16,5 LT VIRTUAL
REFLEX 19,5 LT - 1,5 ALTOP. - 1/2 TUBO = 18 LT REAL
ACCORDO 55 HZ 1 TUBO Ø 65 LUNGO 132 mm
F3 35 HZ → 90 HZ

INDUTTANZA RETTANGOLARE

SINGOLA 6,7mH
DOPPIA 24mH

