

I subwoofer della linea "HDS" sono stati progettati per fornire bassi puliti, profondi e ben controllati, con una gamma dinamica impressionante e distorsione ridottissima.

I coni, in polpa di cellulosa essiccata ad aria, sono impregnati con specifici polimeri, per renderli impermeabili, rigidi e leggeri.

Le bobine mobili multistrato sono avvolte su speciali supporti che assicurano una elevata tenuta in potenza unita a notevoli escursioni, lineari e molto veloci.

Le piastre polari nere ed i poli centrali ventilati incrementano la dissipazione termica, riducendo la compressione dinamica.



The "HDS" line subwoofers are designed to supply pure and powerful basses, impressive dynamic range and very low distortion.

The cone, moulded with air dried cellulose pulp, is impregnated with polymers, in order to make it waterproof, stiff and light.

The multi-layer voice coil is wound on a special former to assure high power handling and linear and fast excursions.

The black colored pole-plate and the vented T-yoke improve the voice coil heat dissipation, reducing the dynamic compression.



HDS 808



HDS 810



HDS 812

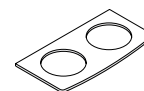


HDS 815



Loudspeaker data			HDS 808	HDS 810	HDS 812	HDS 815
external diameter	-	mm	212	263	309	390
nominal impedance	Zn	ohm	4	4	4	4
max power	Pm	watt	400	500	700	800
nominal power	Pn	watt	200	250	350	400
sensitivity (2,83 V/1m)	-	dB	90	90	92	94
frequency range	BW	hertz	40 ÷ 400	30 ÷ 300	25 ÷ 250	20 ÷ 200
resonance frequency	Fs	hertz	44	27	27	26
mechanical Q factor	Qms	-	12,28	5,19	5,42	5,34
electrical Q factor	Qes	-	0,52	0,53	0,48	0,56
total Q factor	Qts	-	0,49	0,48	0,44	0,51
moving mass	Mms	g	72,4	114,4	123,9	136,0
compliance	Cms	mm/N	0,18	0,30	0,28	0,28
emission diameter	D	mm	164	210	257	328
equivalent volume	Vas	litres	11	51	105	282
force factor	BxL	N/A	11,3	11,1	12,2	11,3
voice coil resistance	Re	ohm	3,3	3,3	3,3	3,3
voice coil inductance	Le	mH	1,6	1,7	1,3	1,3
linear excursion	Xmax	mm	± 7,7	± 10,7	± 5,6	± 5,6
voice coil diameter	-	mm	50	50	60	60
cut out diameter	-	mm	180	227	273	352
installation depth	-	mm	103	120	133	160

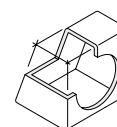
Suggested enclosures		HDS 808	HDS 810	HDS 812	HDS 815
CLOSED BOX	small volume	7 litres	13 litres	22 litres	32 litres
	sensitivity	87 dB @ 80 Hz	88 dB @ 55 Hz	90 dB @ 50 Hz	95 dB @ 70 Hz
	range	70 ÷ 120 Hz	50 ÷ 120 Hz	50 ÷ 120 Hz	45 ÷ 120 Hz
CLOSED BOX	large volume	10 litres	17 litres	32 litres	47 litres
	sensitivity	87 dB @ 70 Hz	88 dB @ 55 Hz	90 dB @ 50 Hz	95 dB @ 60 Hz
	range	60 ÷ 120 Hz	45 ÷ 120 Hz	45 ÷ 120 Hz	40 ÷ 120 Hz
BASS-REFLEX	small volume	10 litres	28 litres	37 litres	93 litres
	sensitivity	91 dB @ 68 Hz	93 dB @ 55 Hz	95 dB @ 60 Hz	97 dB @ 55 Hz
	range	52 ÷ 120 Hz	37 ÷ 120 Hz	42 ÷ 120 Hz	35 ÷ 120 Hz
	reflex tube	Ø 74 x 200 mm	Ø 74 x 170 mm	Ø 94 x 200 mm	Ø 154 x 240 mm
BASS-REFLEX	large volume	14 litres	38 litres	52 litres	122 litres
	sensitivity	91 dB @ 53 Hz	92 dB @ 48 Hz	94 dB @ 50 Hz	97 dB @ 45 Hz
	range	45 ÷ 120 Hz	31 ÷ 120 Hz	35 ÷ 120 Hz	31 ÷ 120 Hz
	reflex tube	Ø 74 x 210 mm	Ø 74 x 170 mm	Ø 94 x 180 mm	Ø 154 x 240 mm
BAND-PASS	closed volume	8 litres	12 litres	23 litres	53 litres
	reflex volume	6 litres	17 litres	21 litres	42 litres
	sensitivity	90 dB @ 58 Hz	92 dB @ 50 Hz	94 dB @ 50 Hz	96 dB @ 45 Hz
	range	52 ÷ 110 Hz	42 ÷ 100 Hz	42 ÷ 120 Hz	35 ÷ 120 Hz
	reflex tube	Ø 74 x 200 mm	Ø 94 x 190 mm	Ø 119 x 180 mm	Ø 154 x 250 mm



FREE AIR

E' un'installazione semplice, ma non fornisce le prestazioni di un box e limita la tenuta in potenza dell'altoparlante.

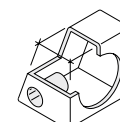
It's an easy installation, but it doesn't offer performances like a box and reduces loudspeaker power handling.



CLOSED BOX

E' il box più piccolo e facile da costruire, ma con una sensibilità inferiore a quella degli altri sistemi.

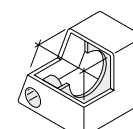
It's the smallest and simplest enclosure to build, but it supplies a little bit lower pressure than other configurations.



BASS-REFLEX

Richiede una maggior abilità per la realizzazione del box, ma offre una gamma bassa corposa ed un'ottima dinamica.

It requests more skill to build the enclosure, but it offers powerful low frequency range and very good dynamics.



BAND-PASS

E' il sistema più critico e difficile da realizzare, suggeriamo la sua costruzione solo a persone molto esperte.

It's the most critical and hard to build enclosure, we suggest its construction just to very expert people.