



# Alfa

## 無線車載智能終端產品使用說明書

### Vehicle-mounted wireless intelligent terminal

## NO.1 功能說明 / Functional statement



CarPlay



百度CarLife



AndroidAuto



Mirroring



Media



Front/Right/Left/360



AHD 視頻解碼



DSP 數字音效解碼



超級快速充電模式

### • CarPlay

iPhone內置的車載交互系統配合中央控制旋鈕按鍵車載語音控制電話、信息、導航、音樂與siri語音互動獲取更多信息；支持無線和有線連接；  
The built-in car-computer interaction system of the iPhone cooperates with the central control knob button to operate the voice control phone, and the information, navigation, music and Siri voice interact to obtain more information; Support wireless and wired connection CarPlay;

### • CarLife

百度公司開發的車載互聯系統，支持安卓設備連接，CarLife內置的“小度”語音控制系統控制電話、信息、導航、音樂，支持無線和有線連接；

### • AndroidAuto

Google公司開發的原生態Android車機交互系統，語音控制電話、信息、導航、音樂，支持有線連接；  
The original Android car-computer interaction system developed by Google supports voice control of telephone, information, navigation and music;

### • Front/Right/Left/360

智能模塊可解碼視頻，並配置前視、後視（支持智能動態軌跡和雷達顯示）、右側盲區和360全景；  
The intelligent module can decode video, and can be equipped with front view, rear view (supporting the display of intelligent dynamic track and radar), right view and 360 panorama;

### • Mirroring

支持蘋果和安卓手機的有線和無線鏡像；  
Supports wired and wireless mirroring of iPhone and Android phones;

### • AHD 視頻解碼

支持所有視頻解碼AHD高清輸入；  
Support AHD HD video input;

### • Media

支持本地高清視頻和無損音樂播放；  
Support local HD video and lossless music;

### • DSP 數字音效解碼

系統內置數字音效處理單元，讓車載音響完美提升；  
Built-in DSP sound processing unit effectively improves sound quality;

### • 超級快速充電模式

系統內置智能高效充電處理單元，實現快速充電功能，過載保護，監測手機充電環境。  
The system has built-in intelligent and efficient charging processing unit to realize fast charging function, overload protection and monitor the charging environment of mobile phones.

## NO.2 參數&規格 / Box parameters and warranty

工作電壓 running voltage : 9-16V, 14.4V (rated)	儲藏溫度 Storage temperature: -30~+85°C
工作溫度 operating temperature : -30~+75°C	環境濕度 Ambient humidity: ≤98% (at45°C) , 65±5% (rated)
功耗電流 Power consumption current: 1A (rated) , 3A (Max)	關機電流 Shutdown current: 300mA (Clock is on)
靜態電流 quiescent current: less than 3mA	
充電電流 charging current: ≤ 1.5A. 當USB充電電流> 3A時, 系統快充單元的智能芯片將自動啟動電路保護, 將充電電流控制在1.5A以下, 保護手機充電過載。 ≤1.5A. when the USB charging current is > 3A, the host computer of the radio and receiver should start the circuit protection function to control the current below 1.5A to avoid burning the product.	

## NO.3 產品保修條款 / Warranty clause

### 尊敬的用戶 Dear users:

非常感謝您使用本公司產品, 我們的產品在出廠前已經過嚴格的功能及性能測試, 確保每件產品在良好的狀態交給用戶。

所有產品均享受車載電子三包政策。

Thank you very much for using our products. Our products have passed strict functional and performance tests before leaving the factory to ensure that each product is in good condition Give it to users. All products enjoy the Three Guarantees policy.

### 以下條例將不在免費保修服務範圍之內

#### The following regulations will not be covered by the free warranty service

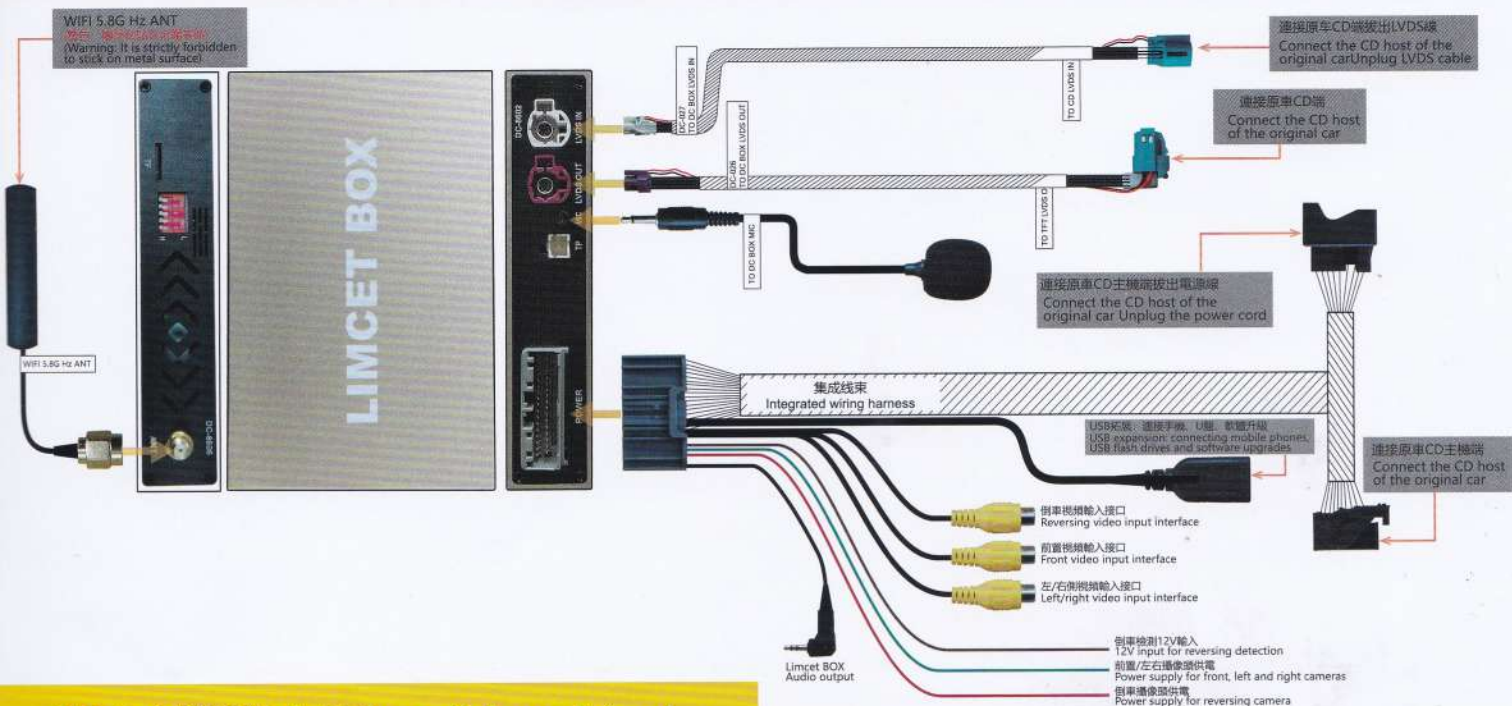
1. 超過免費保修期限, 外觀劃傷、污損、變形。  
After the free warranty period, the appearance is scratched, dirty and deformed.
2. 保修卡和購機憑證與產品型號不符合或者有塗改痕跡的產品。  
The warranty card and purchase certificate are inconsistent with the product model or have altered marks.
3. 主機機身條形碼不清晰或無條形碼產品。  
The bar code of the host machine body is unclear or there is no bar code product.
4. 未按照產品說明書要求使用、維護、拆修、改裝造成損壞的產品。  
Failure to use, maintain, repair or refit according to the requirements of the product manual causes damage.
5. 因不可抗力因素損壞 (如火災、水災、交通事故、雷電、地震等)。  
Damage due to force majeure (such as fire, flood, traffic accident, lightning, earthquake, etc.).

## NO.4 材料清單 / Parts details

配件編號 Match number	配件名稱 Accessories name	配件規格 Accessories specifications	出廠狀態 Factory status
DC-L8601	無線終端模塊 LIMCET BOX		檢驗合格 <input checked="" type="checkbox"/>
DC-L8602	集成電源線 Integrated wiring harness		檢驗合格 <input checked="" type="checkbox"/>
DC-L8603	LVDS線		檢驗合格 <input checked="" type="checkbox"/>
DC-L8604	WIFI ANT		檢驗合格 <input checked="" type="checkbox"/>
DC-L8605	MIC		檢驗合格 <input checked="" type="checkbox"/>
DC-L8606	產品包裝 Product packaging		檢驗合格 <input checked="" type="checkbox"/>



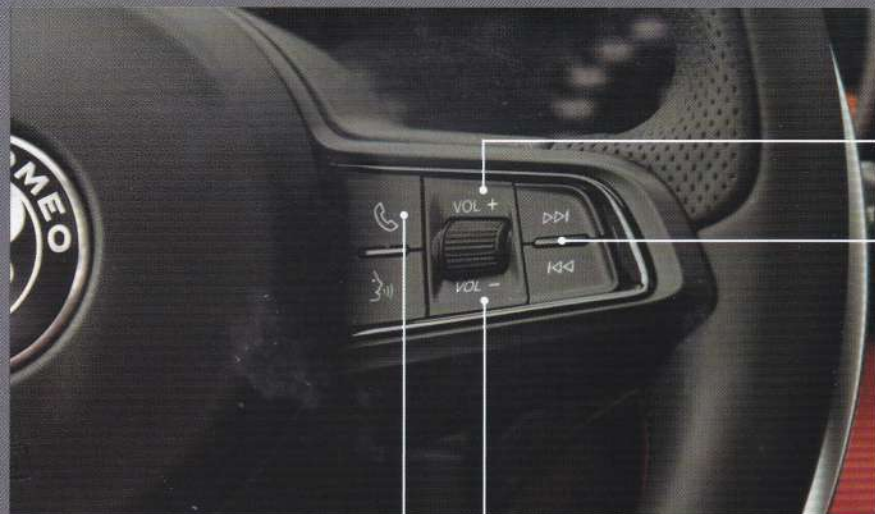
# NO.5 阿尔法·罗密欧 Alfa Romeo 連線示意圖 / Schematic diagram of connection



## NO.5-1 撥碼說明 / Dip switch explained



## NO.5-2 Alfa Romeo 按鍵操作說明 / Operating instructions for steering wheel buttons



\* 系統音量增加  
System volume increases

\* 控制媒體上下曲  
Control the media up and down

\* 系統音量減小  
System volume decreases

\* 語音喚醒  
Voice awakening

\* 來電接聽  
Call answering

\* 結束通話  
End call



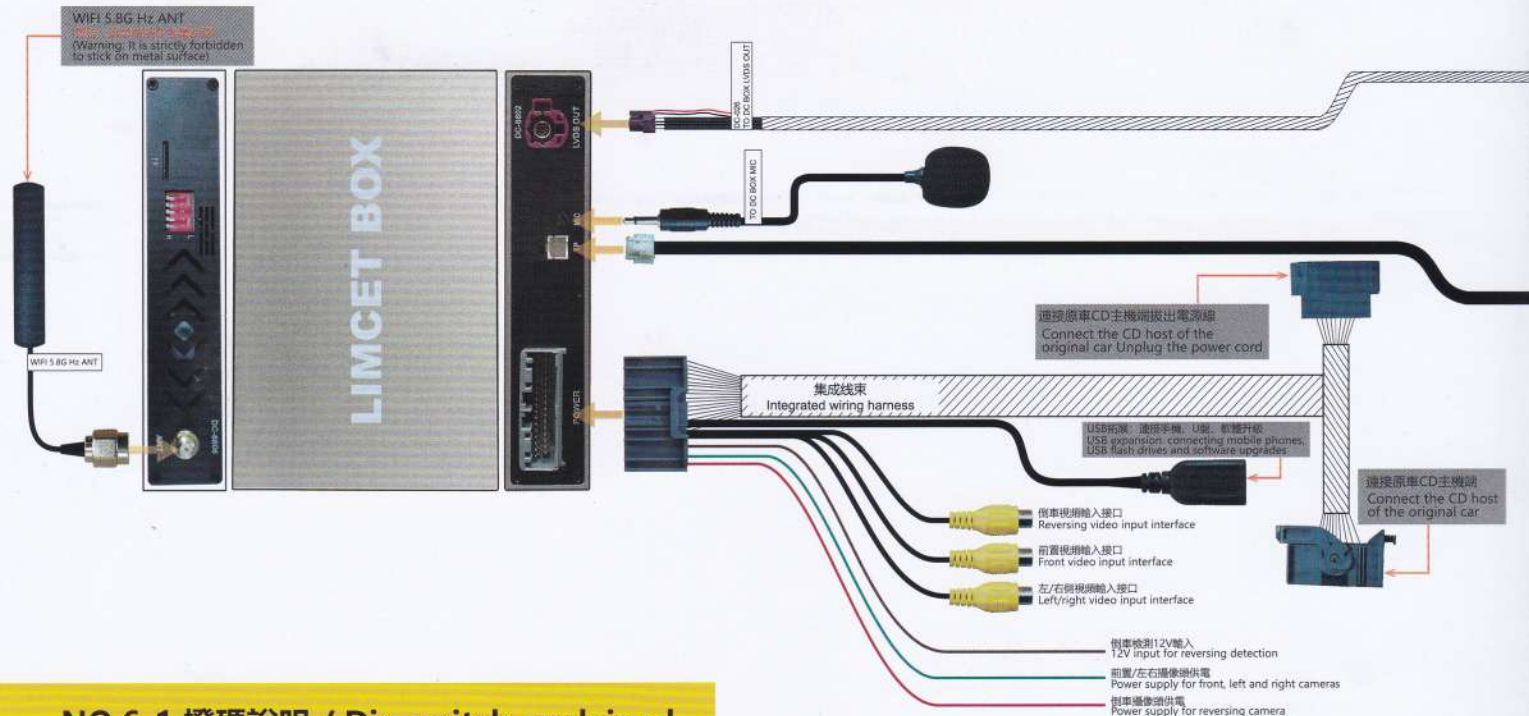
\* 控制媒體上下曲  
Control the media up and down

\* Idrive旋鈕控制系統APP  
Idrive knob control system APP  
\* 按下進入APP功能  
Press to enter the APP function  
\* 方向鍵控制光標移動  
The arrow keys control cursor movement

\* 長按2秒進入系統頁面  
Press and hold for 2 seconds to enter the system page  
\* 短按回系統主頁面HOME  
Short press back to the HOME page of the system



# NO.6 Alfa Giulietta連線示意圖 / Schematic diagram of connection



## NO.6-1 撥碼說明 / Dip switch explained

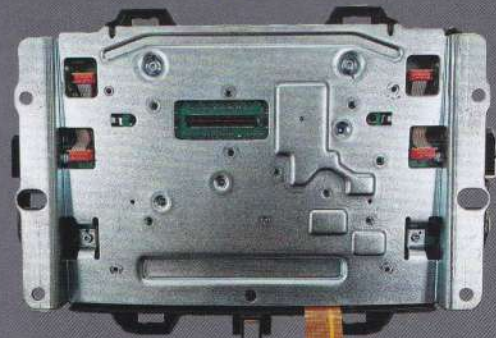




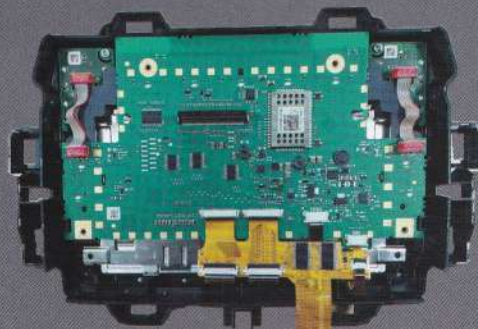
## NO.6-2 Alfa Giulietta主機安裝示意圖 / Schematic diagram of host installation



⑧



⑦



⑥

請按①——⑧序列安裝



①



②



③



④



⑤

## NO.6-3 Alfa Giulietta 按鍵操作說明 / Operating instructions for steering wheel buttons



\* 長按2秒進入系統頁面

Press and hold for 2 seconds to enter the system page

\* 控制媒體下一曲

Control the media down

\* 語音喚醒

Voice awakening

\* 來電接聽

Call answering

\* 結束通話

End call

\* 控制媒體上一曲

Control the media up





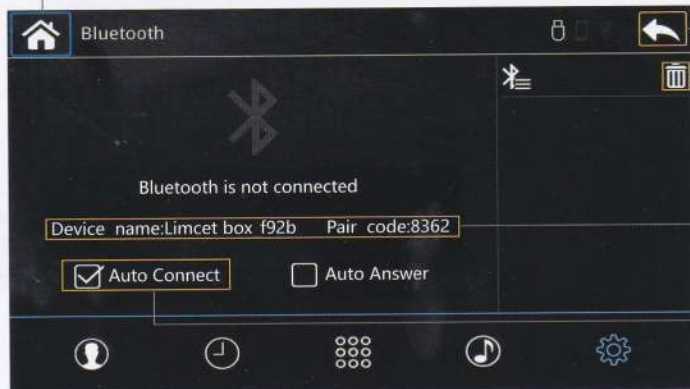
\* 觸摸控制APP  
Touch control APP



## NO.7 運行 iPhone Carlay / Run iPhone Carlay

選擇系統主頁面藍牙圖標，進入藍牙連接頁面

Click the [Bluetooth] icon in the system main interface to enter the Bluetooth connection interface



點擊回主頁  
HOME

點擊回上一級頁面  
BACK

點擊刪除藍牙列表名稱  
Clear bluetooth list

打開iPhone藍牙并連接此設備名稱  
Turn on bluetooth on iphone and connect this device

勾選開啟下次藍牙自動連接，反選取消  
Bluetooth automatic connection button

有線連接即插即用  
Plug and Play



LIMCET BOX

# iPhone無線連接步驟 / Wireless CarPlay connection steps

11:44

- 1 開啟iPhone無線局域網即可  
Turn on IPHONE WLAN



- 2 開啟藍牙設備，并搜索系統藍牙  
Search for bluetooth devices



- 3 點擊允許設備配對  
Allow pairing devices



- 4 點擊允許使用車載CarPlay  
CarPlay onboard is allowed



## NO.8 運行 iPhone Mirroring鏡像 / Run iPhone Screen Mirroring

1 選擇系統主頁面Mirroring圖標并勾選iPhone手機

Click the [Bluetooth] icon in the system main interface to enter the Bluetooth connection interface



2

開啟iPhone無線局域網并搜索CarPlay wifi,  
Turn on IPHONE WLAN and connect the  
current device WLAN



3

輸入WLAN 密碼: 88888888,  
Enter WIAN password:  
88888888



4

進入iPhone快捷界面, 在屏幕鏡像列表中選擇Mirroring設備,  
完成鏡像連接。  
Enter the iPhone shortcut page, select the device in the  
Screen Mirroring list, and complete the Mirroring operation

iPhone 支持無線和有線連接 / iPhone supports wireless and wired mirroring



## NO.9 運行Android Mirroring鏡像 / Run Android Screen Mirroring

選擇系統主頁面Mirroring圖標并勾選Android手機  
Enter Mirroring on the system homepage and check Android



打開手機設置，進入移動網絡，打開個人熱點  
Enter the phone settings and turn on the personal hotspot



開啟個人熱點開關  
Turn on mobile phone hotspots  
更改熱點名稱: link\_7189  
Change the hot spot name: link\_7189

更改熱點密碼: 54920974  
Change hotspot password: 54920974

修改AP頻段為5.0GHz  
(注: 2.4GHz會導致聲音卡頓)  
Hot spot frequency selection: 5.0GHz



打開手機端 Mlink APP軟件并點擊立即使用，實現無線投屏，有線連接即插即用、無需以上操作  
(Mlink APP請向經銷商索取)  
Open the Mlink APP software on the mobile phone and clickUse it immediately to realize wireless screen projection and wired connection Plug and play without the above operations  
(Mlink APP please ask the dealer for it)

## NO.10 運行 Android Auto / Run Android Auto (僅限於國外及港澳台用戶)

選擇系統主頁面藍牙圖標，進入藍牙連接頁面

Click the [Bluetooth] icon in the system main interface to enter the Bluetooth connection interface



打開手機設置，進入藍牙，打開藍牙開關  
Turn on the phone settings, enter Bluetooth, and turn on the Bluetooth switch



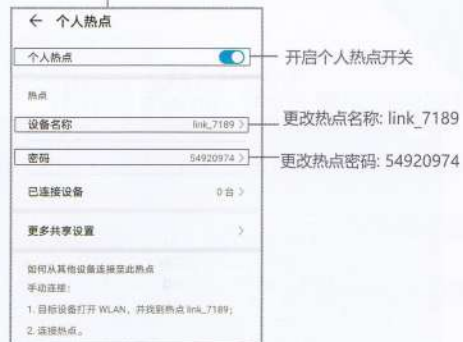
允許藍牙連接  
Confirm use of connection



打開手機端Android Auto APP系統將自動進行連接，有線連接即插即用，無需以上操作  
Opening the Android Auto APP system on the mobile phone will automatically connect, and the wired connection is plug and play, without the above operations

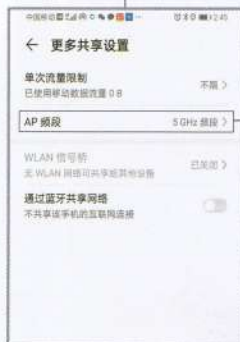
## NO.11 运行 百度CarLife (仅限于中国大陆用户)

### ① 选择系统主页面蓝牙图标，进入蓝牙连接页面



2

打开手机设置,进入移动网络  
打开个人热点



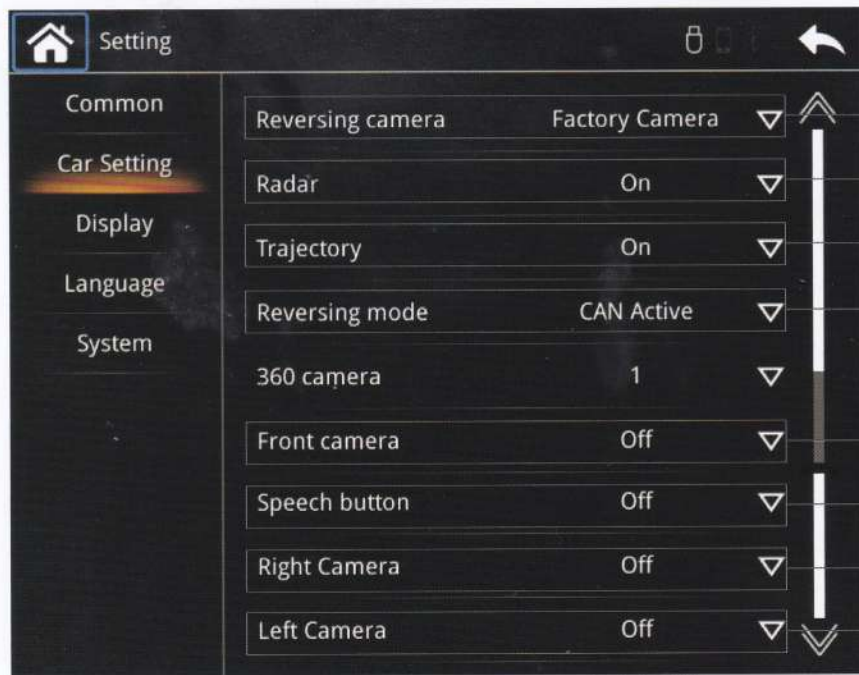
3

进入更多共享设置



打开手机端百度CarLife+ APP系统将  
通过设置好的热点自动进行无线连接,  
有线连接即插即用。无需以上操作





攝像頭選擇 Camera selection

雷達開關 Radar switch

動態軌跡開關 Dynamic track switch

倒車模式選擇 Reversing detection mode

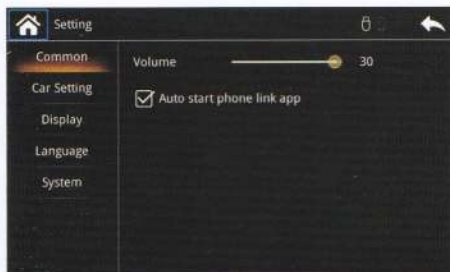
前置攝像頭開關 Front camera switch

方向盤語音開關 Steering wheel voice button switch

右側攝像頭開關 Right camera switch

左側攝像頭開關 Left camera switch

## 手機自動連接開關 Automatic mobile phone connection switch



## 對比度調節 Contrast adjustment



## 語言選擇列表 Language selection



## 系統信息查看 View system version number



# 合格證 CERTIFICATE

產品名稱:  
Product name

規格型號:  
Model

出廠日期:  
leave factory date

檢 驗 員:  
Inspector

生產廠家:  
Manufacturer



本產品經檢驗符合規定  
的質量標準，准予出廠

This product meets the  
requirements after inspection  
The quality standard, allowed  
to leave the factory

**authorized dealer**



FC | C E

FCC&CE Certified