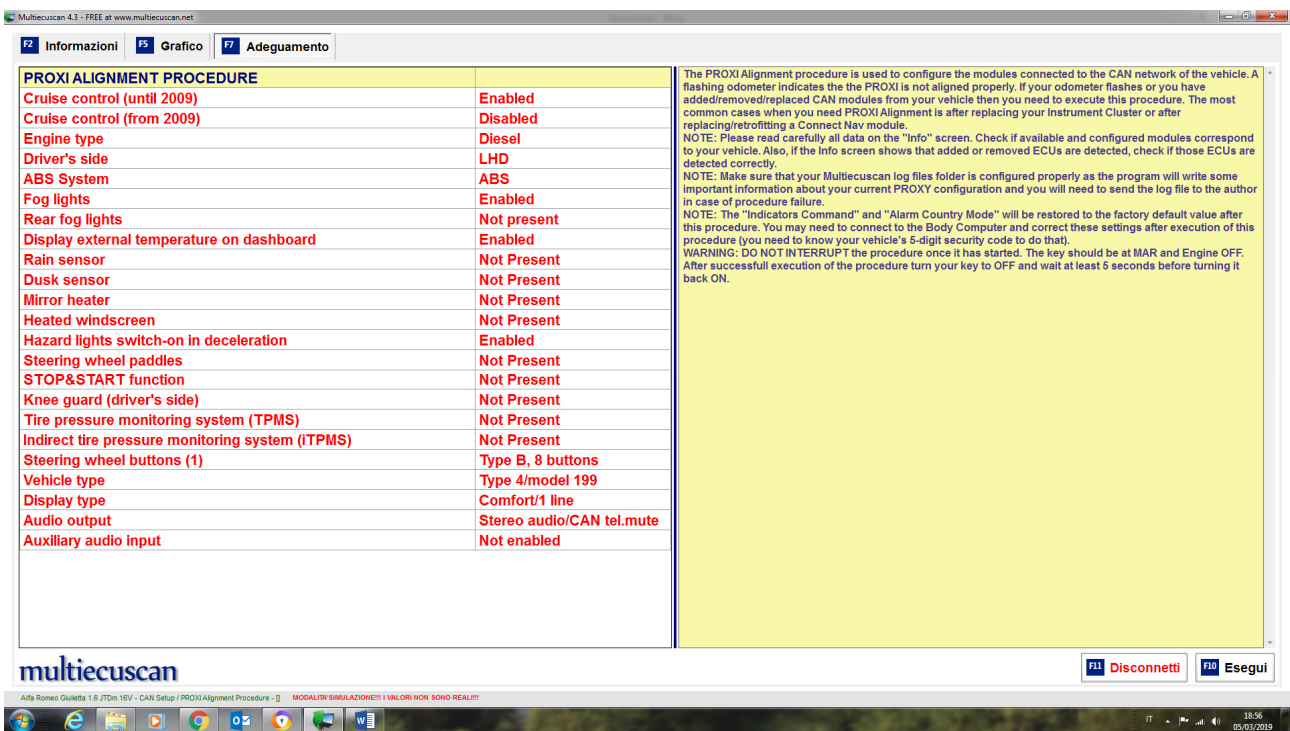


CAN Setup/PROXI Alignment Procedure



CTRL+ALT+C

The screenshot shows the Multiecuscan 4.3 software interface. The main window is titled "PROXI ALIGNMENT PROCEDURE" and contains a list of vehicle settings with their current status:

Cruise control (until 2009)	Enabled
Cruise control (from 2009)	Disabled
Engine type	Diesel
Driver's side	LHD
ABS System	ABS
Fog lights	Enabled
Rear fog lights	Not present
Display external temperature on dashboard	
Rain sensor	
Dusk sensor	
Mirror heater	
Heated windscreen	
Hazard lights switch-on in deceleration	
Steering wheel paddles	
STOP&START function	
Knee guard (driver's side)	
Tire pressure monitoring system (TPMS)	
Indirect tire pressure monitoring system (ITPMS)	
Steering wheel buttons (1)	
Vehicle type	
Display type	Comfort/1 line
Audio output	Stereo audio/CAN tel.mute
Auxiliary audio input	Not enabled

A "Custom PROXI" dialog box is open, showing a list of hexadecimal values for bit configuration:

```

33 38 31 39 39 30 30 35 31 34 34 4F 55 54 50 55 54 2D 4A 49 54 20 0B
07 13 6F 00 00 04 02 00 00 09 00 00 04 02 00 00 00 C1 00 03 07 3F
00 2A 20 A3 80 00 06 00 00 00 94 06 03 02 00 00 00 0A 10 05 04
00 00 00 00 00 00 00 00 00 00 11 00 50 00 10 00 00
  
```

The dialog box also includes a "Byte 0" label and an "OK" button.

At the bottom of the software interface, there are buttons for "F11 Disconnetti" and "F10 Esegui".

Qui modifichi i bit e confermi con F10

Bit 29 da 04 a 05 per attivazione sensori parcheggio

Bit 118 da 00 o 10 a 90 con sensori anteriori a 80 senza sensori anteriori ma solo posteriori