

# Installation Manual

Video Interface for FIAT 500 Series

Model : QPI\_LVTVX\_FIAT



# •Specification

Compatibility : 2016 FIAT 500 Series, Alfa Romeo

Components : Interface\* 1pcs, Subboard\* 1pcs

## Interface Input/Output specification

Input : Analog RGB\*1, A/V\*1, CVBS(Rear Camera)\*1  
CVBS(Front Camera)\*1

Output : To LCD\*1

## Power Spec

Input Power : 8VDC ~ 18VDC

Consumption : 5WATT

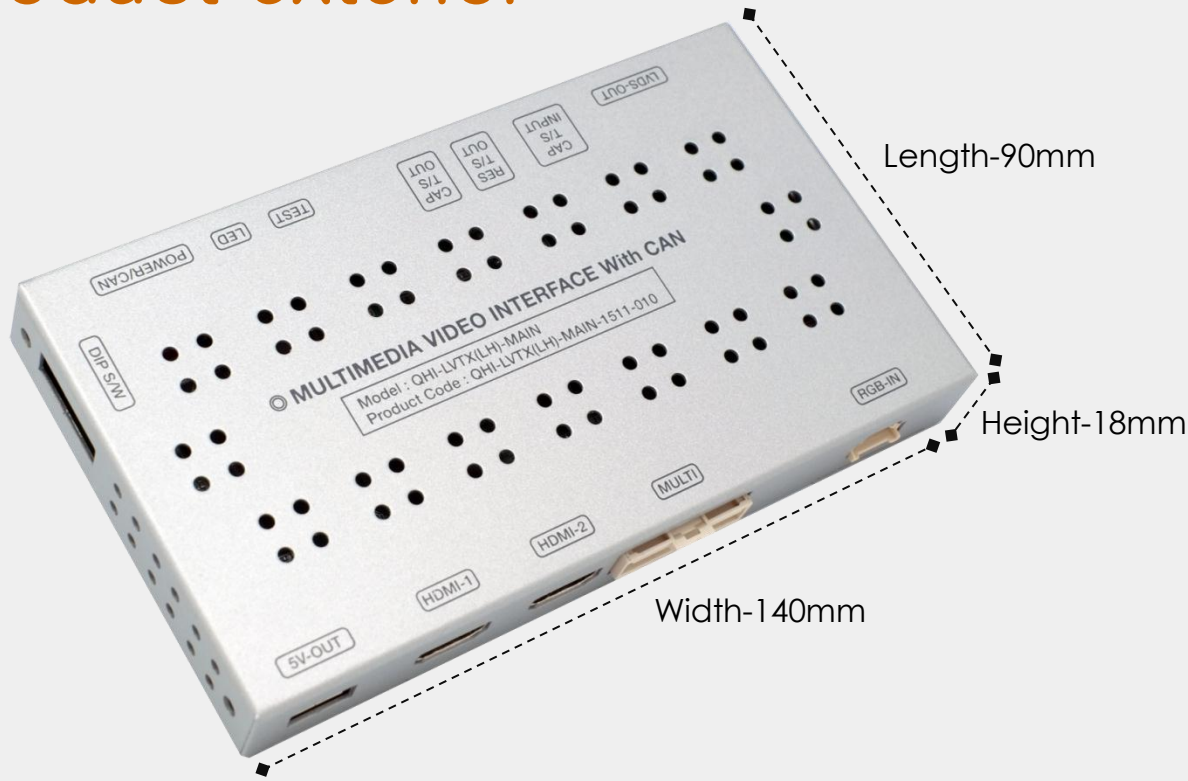
## Switch input mode

- External video sources skip function : able to control input videos on and off via DIP switches.
- Able to switch videos via the remote, button switch, and original buttons.
- Able to detect the rear view camera (back up camera) via Lamp or CAN.

# •Features

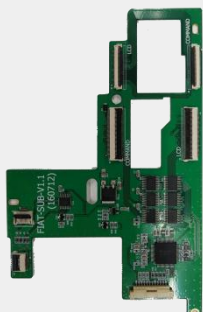
- Control external videos sources (DVD, DTV) via Multi Media Touch
- Adjust external videos screen position
- Check the improved Screen Display (User Friendly Interface)
- Switch modes via original OEM button
- Supply power to rear view camera (Back up camera)
- Offer Dynamic Pas(Parking assistance system), moving parking line based on the steering wheel movement.

# •Product exterior



MODE(Button cable) | IR(IR cable) | POWER(Power cable) | REAR(rear cable) |  
RGB-IN-HDMI(Mirroring connection) | RGB-IN-NAVI(RGB Navigation) |  
AV IN/OUT(AV cable) | TO NAVI T/S OUT(NAVI touch cable) | LVDS-OUT(Subboard)  
TEST(No use) | LED | DIP S/W(Dip switch setting)

# •Components



Sub board \* 1ea  
(PCBSUBC0441)



Power \* 1ea  
(HPOWER0044)



TOUCH \* 1ea  
(HTOUCH0004)



NAVI \* 1ea  
(HRGBCA0013)



AV \* 1ea  
(HAVCAB0002)



LVDS \* 1ea  
(HLVDSC0047)



FFC\* 1ea  
(FFCBAL0079)



FFC\* 1ea  
(FFCBAL0078)



FFC\* 1ea  
(FFCBAL0072)



R-CAM \* 1ea  
(HARETC0002)



BUTTON \* 1ea  
(HARETC0001)



IR \* 1ea  
(HIRCAB0002)



Remote \* 1ea  
(REMOTE0001)

# •DIP SWITCH 설정



※ ON : DOWN / OFF : UP

PIN	Function	Dip S/W
1	RGB mode	OFF : Display RGB(Navi) Mode ON : Skip RGB(Navi) Mode
2	AV1 mode	OFF : Display AV1 Mode ON : Skip AV1 Mode
3	AV2 mode	OFF : Display A/V2 Mode ON : Skip A/V2 Mode
4	Front camera	OFF : Display A/V3 Mode ON : Skip A/V2 Mode
5	Car model	5-OFF 6-OFF : Fiat 500c(Europe version) 5-ON, 6-OFF : Fiat 500x 5-OFF, 6-ON : Alfa Romeo 5-ON, 6-ON : Fiat 500c(Default)
6		
7	Rear Camera	ON : Aftermarket rear camera OFF : OEM rear camera
8	No use(OFF)	

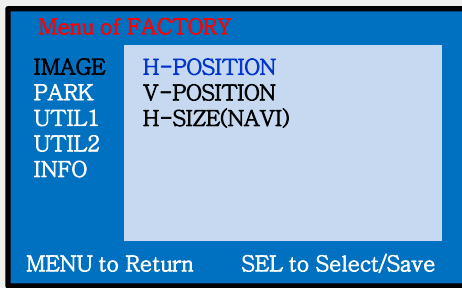
※ Please make sure to disconnect and reconnect the power cable after changing the dip switch setting. Otherwise, new dip switch setting will not be applied.

# •Remote Control



Key	Function
POWER & PIP	No use
MENU	Activate FACTORY mode
OK	Select, Changing image display
▲	Move up
▼	Move down
◀	Move left(Access to the factory mode if you press this button more than 2 seconds)
▶	Move right (Activate the data reset if you press this button more than 2 seconds)

# •Factory Setting

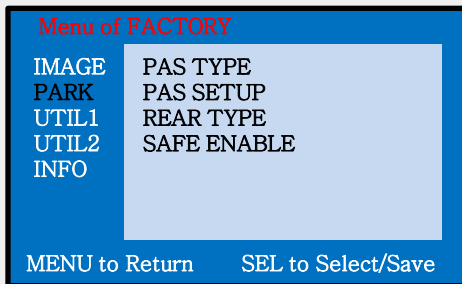


## Adjust the position and size of image

**H-POSITION** : Move the image horizontally

**V-POSITION** : Move the image vertically.

**H-SIZE(NAVI)** : Adjust the size of navigation image horizontally

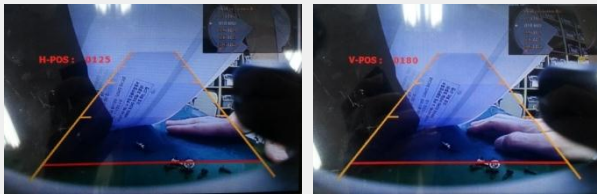


## Setting for rear camera

**PAS TYPE** : Parking guideline setting

- NOT USED : No use parking guideline
- PAS ON : Selecting Dynamic parking guide line
- PAS OFF : Selecting fixed parking guide line

**PAS SETUP** : adjusting the position of the parking guideline



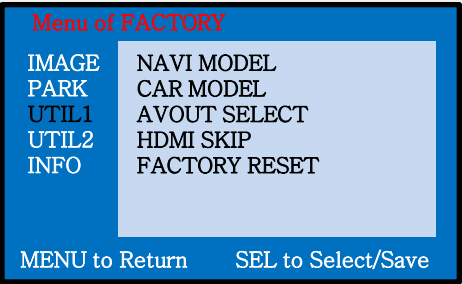
**REAR TYPE** : Choose rear camera recognition

- \* LAMP – Detecting the rear view camera via rear lamp (Installer must connect “Rear-C” cable of the power cable to the rear lamp of the car.)
- \*CAN – Detecting the rear view camera by CAN signal (Installer must connect “CAN” cable of the power cable to the “CAN” cable of the car.)

**SAFE ENABLE** : Able/unable to display the image of external modes while driving(Default: Off)



# •Factory Setting



## Select Navigation&Car model

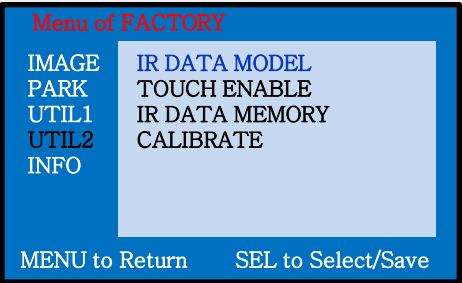
**NAVI MODEL** : Select RGB Navigation model

**CAR MODEL** : No use

**AVOUT SELECT** : Select background mode sound  
via Car Aux(AV1, AV2, Default)

**HDMI SKIP** : Able to skip HDMI mode

**FACTORY RESET** : FACTORY mode reset.



## Setting for other options

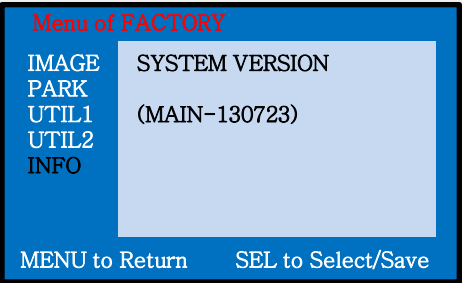
**IR DATA MODEL** : Resister IR Memory of DVD, DTV  
(Default, User)

**TOUCH ENABLE** : Activate/Deactivate  
UI remote touch

**IR DATA MEMORY** : Enter Remote values  
of DTV, DVD

**CALIBRATE** : Activate Touch calibration

✗ Refer to IR manual for IR settings



## Able to check the version of product

## •순정버튼 사용

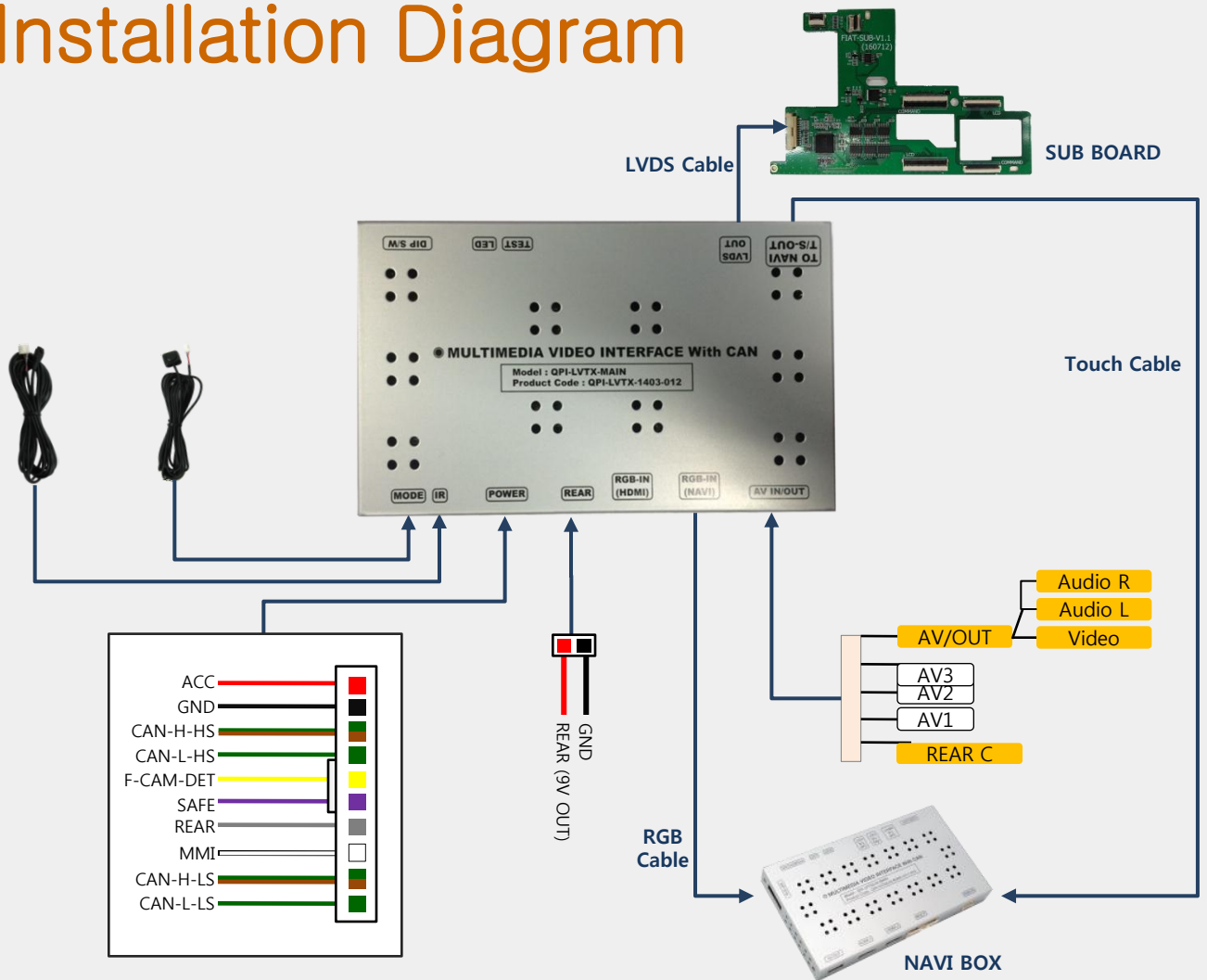
- ※ Long press – Activate the front camera  
(Front camera image will disappear 10 seconds later)



- ※ Long Press – Mode switch (RGB→AV1→AV2→F-CAM)  
Short Press – Return to OEM mode

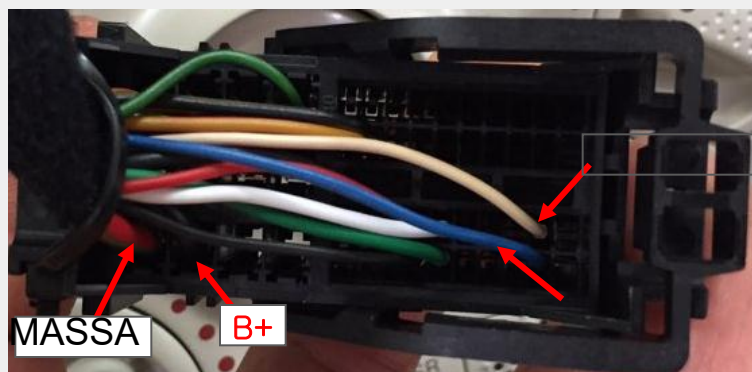
- ※ Return to OEM mode if other buttons are pressed

# •Installation Diagram



## •CAN / ACC wire connection

※ Find OEM cables behind the command



BIANCO = CAN L

BLU = CAN H

### ※ Connection

- Connect Supplied CAN-H-HS wire(Green+Brown) to OEM CAN HIGH wire(White)
- Connect Supplied CAN-L-HS wire(Green) to OEM CAN LOW wire(Blue)
- Connect supplied ACC wire(Red) to OEM B+ wire(Black)
- Connect supplied GND wire(Black) to OEM Ground (Red+Brown)

※ Cable position might be different based on certain car models but the color of wires is same



# •Subboard Monitor Connection

1



Disassemble the monitor

2



Remove the original FFC cable in a circle

3



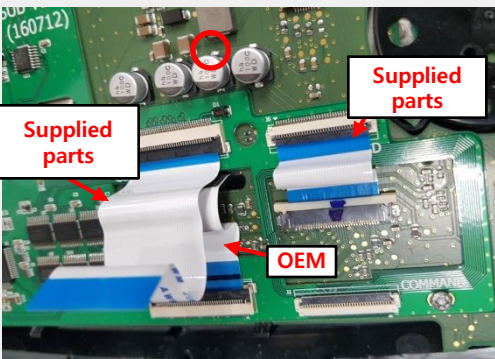
Put the supplied subboard on the top of PCB board and assemble bolts in marked places (Use OEM bolts)

4



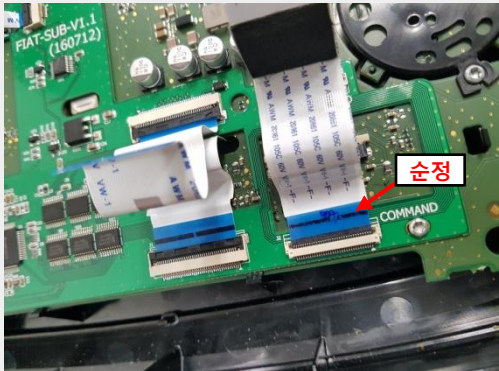
Connect touch cable as shown above

5



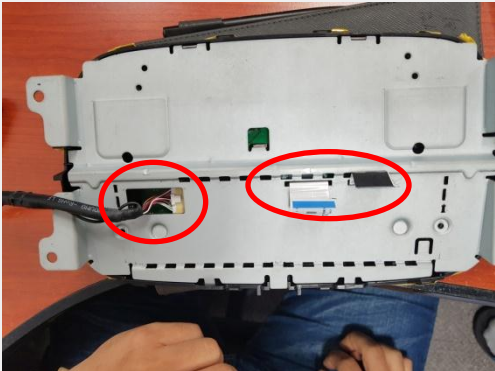
Connect FFC cable as above

6



Connect the original FFC cable which is removed from NO. 2 Instruction to the marked place

7



Take out the FFC&LVDS cables from marked holes

# •Trouble shooting

## **Q. I cannot change mode**

A. Check connection of Ground cable and IR Cable. Check LED lamp is on, if not check connection of POWER cable.

## **Q. All I got on the screen is black.**

A. Check second LED lamp of the interface is on, if not, check A/V sources connected are working well.  
(Second lamp indicates AV sources connected works well.)  
Check interface connection has been done well.

## **Q. Displayed image color is not proper (too dark or unsuitable color)**

A. Press ► button on the remote control for 2 seconds and check how it goes, if it does not work, inform to manufacturer.

## **Q. I cannot watch the rear camera on the screen**

A. Set the DIP switch #7 as state "ON".

## **Q. Set mode not appear**

A. Check DIP Switch.

## **Q. OEM image is not displayed.**

A. Check interface's LCD In/Out cable connection. If the status keeps on, inform to manufacturer.

## **Q. Screen only displays white color.**

A. Check LCD out cable is connected well, if this status keeps, inform to manufacturer.

## **Q. If the original screen is shown half only after using the handle button for running the PIP function.**

A. This is not because of defect but incorrect setting up. Make sure to set up the original monitor function as "split screen"

## **Q. If no image is shown on screen after connecting CAN wire with Park gear.**

A. Go on the "FACTORY MODE", check "UTIL-Rear Select". If "LAMP", change the setting as "CAN" with the remote control. (※ when connecting Rear-C wire of LAMP power cable to Backup lights, Setting should be like this / CAN : if controlling rear camera with CAN wire)